

Village of Port Edwards

PUBLIC MEETING NOTICE
PUBLIC WORKS COMMITTEE MEETING
Wednesday, December 27, 2023
9:30 A.M. at the Marshall Buehler Center

Zoom Meeting: <https://us06web.zoom.us/j/89112530709?pwd=4aE6EkVhzb6NqkmdCEmUN38IX4j1eb.1>

Meeting ID: 891 1253 0709 Passcode: 469046

One tap mobile

+13017158592,,85044360036#,,, *354244# US (Washington DC)

+13052241968,,85044360036#,,, *354244# US

Phone call only- Meeting Dial-in number: 715-423-6698, Access Code ID: 02067

PW Agenda:

- 1) Call to order
- 2) Roll call
- 3) Approve the agenda
- 4) Approve the October 19, 2023 minutes
- 5) Public comments on agenda items
- 6) Chairperson comments
- 7) Department of Public Works report
- 8) Update on 2024 summer projects
- 9) Discussion on end loader purchase (Budgeted item)
- 10) Old Business
- 11) New Business
- 12) Correspondence received
- 11) Agenda items for next meeting
- 12) Adjourn

Village of Port Edwards
Lonn Radtke – Committee Chairman

VILLAGE OF PORT EDWARDS

Port Edwards, Wisconsin

COMMITTEE: Public Works

DATE: October 19, 2023

TO: BETSY MANCL

cc: JOSEPH ZURFLUH

JEN MOORE

TIARA GRUNDEN

SCOTT DREW

CALEB MCGREGOR

ERIK SAYLOR

DAILY TRIBUNE

WFHR/WGLX

NICK ABTS

JASON WORDEN

DIANE TREMMEL

LONN RADTKE

Purpose of Meeting: Regular Monthly Meeting

Attendance: L. Radtke, E. Saylor (Zoom), J. Zurfluh, B. Mancl, Public Works Supervisor Ben Martinson

Citizens: None

Subjects Discussed, Action Taken & Board Action Required:

Regular Monthly Meeting

- ***Call to order:*** Meeting called to order by Chairman Radtke at 4:00 p.m.
- ***Roll Call:*** All present from above.
- ***Approve the agenda & previous month's minutes:*** **MOTION** (Zurfluh /Saylor) to approve the agenda & minutes from September 20, 2023. Motion carried. All ayes.
- ***Public comments on agenda items:*** None.
- ***Committee Chairman's comments:*** None.
- ***Public Works Updates***
 - a. **Department of Public Works Report - Project Update.** Ben Martinson said Fall clean-up is under way, Road Patching, getting snow plow ready. Will need one load of road salt about 28 ton on hand.
- ***Discussion on 2024 Public Works Budget***
 - a. Budget / Ben Martinson meet with Diane and took out 100,000.00 on road account (400 account) and 21,000 on road engineering account and came up with a balanced budget for the street Dept.

- b. Also the water rate was discussed, with rates increasing in 2024 which was set by the water commission
- **Old Business:** Discussed cost of wood county doing road work on Range Rd cost around 100,000.00 will get a written cost to bring back to public works.
 - **New Business:** Trustee Saylor would like Ben to put a new truck pick up in his budget as it has been pushed back for two years to balance the budget.
 - **Correspondence received.** None.
 - **Future Agenda items for next meeting:** None/ next meeting Nov 15, 2023, 4:30 pm
 - **Adjourn:** Adjourned at 4:20 p.m.

Lonni Radtke – Chairman
Minutes taken by Lonni Radtke



Wood County WISCONSIN

OFFICE OF
HIGHWAY COMMISSION

Roland Hawk
COMMISSIONER

Ben Martinson, Public Works Supervisor
Village of Port Edwards, Wood County
201 Market Ave, Port Edwards, WI 54469

November 14, 2023

Re: Range Line Road

Mr. Ben Martinson,

Wood County Highway is pleased to submit the following estimate for the following project:

Range Line Road (Pulverize & Pave):

The project would include adding 3" of base and pulverizing the existing asphalt and placement of 2 inch layer of HMA over the pulverized road way 22 feet wide by 3,000 feet long. The estimate also includes placement of 2 foot shoulders at 2" thick the length of the road way.

The approximate cost to perform this work is\$95,000.00

Range Line Road (Concrete Removal):

The project would include adding 3" of base and pulverizing the existing asphalt and placement of 2 inch layer of HMA over the pulverized road way 22 feet wide by 3,000 feet long. The estimate also includes placement of 2 foot shoulders at 3" thick the length of the road way, and the removal of approximately 650 feet of 8" thick concrete (360 CY).

The approximate cost to perform this work is\$108,000.00

If the Town should have any questions, please feel free to contact me at 715-421-8875.

Respectfully Submitted,

Brandon Whipple, Highway Engineer
Wood County Highway Department

2024 Wheel Loader Proposal Summary

Vendor	Equipment Manufacturer	Model	Price	Trade-In	Net Cost
Aring Equipment Co.	Volvo (2024)	L60H	\$188,500.00	\$37,000.00	\$ 151,500.00
Roland Machine	Komatsu (2023)	WA270-8	\$208,100.00	\$45,000.00	\$ 163,100.00
Brooks Tractor	John Deere	524	\$199,900.00	\$56,000.00	\$ 143,900.00
Caterpillar Inc.	Caterpillar	926-14	\$202,725.23	\$60,000.00	\$ 142,725.23

October 13th-17th - Brooks delivered 524 to shop for 16 hours of demo time
November 15th - Fabrick test drive of 926M
Warranty - Brooks - 3 year, 3000 hours
Caterpillar - 1 year, unlimited hours
Caterpillar price is \$1,174.77 cheaper
Brooks - Demo was model quoted (524)
Caterpillar - Demo was 926M - the machine quoted is 926-14 which will begin manufacture late 2023

RANK PRICE	RANK WARRANTY	RANK OPERATE MACHINE
2	1	1
1	2	2

John Deere 524P Wheel Loader

Engine : Manufactured and engineered by John Deere, final 4 emissions 5 year or 10,000 hrs warranty, 60% torque rise. Wet -sleeve cylinder liner design for improved cylinder cooling. All daily checks points are accessible from one side of engine and are done from ground level.

Axles: Final drives heavy duty inboard-mounted planetary. Front and rear axles hydraulically actuated locking differentials for maximum traction when required but with less tire wear than limited slip or no-spin. Manual or automatic differential. Axle oil cooling filtration.

Hydraulic System: Hydraulic service interval of 4000 hours and hydraulic fluid rated life of 4000 hours. In cab adjustable automatic return to dig to level. Hydraulic settings for up to 10 attachments. Precision mode for operations requiring precise controls of hydraulics. Hydraulic fluid XR temps 140f to -40

Electrical: Solid-state electrical power distribution system. Keyless start with configurable security settings. LED lighting for greater visibility during night time operations. Two batteries 950 CCA.

Cab: Four points of contact at all times at front and rear of loader and around the roof line. Premium seat with high wide back and headrest extension. Heated and ventilated, leather/fabric cover. Premium radio, throttle lock, wheel spin, 5 speed transmission, HIGHEST trim pkg and performance pkg John Deere offers.

Frame and structures: Frame 4-plate design of four vertical plates extending from boom pivots pins reaching to the front axle to distribute boom loads on axle. The design is superior to the two plate frames.

Option INCLUDED

Ride control, Axle coolers and filtration, Level 3 trim Pkg, Level 2 performance Pkg, Rear camera, Michelin X Snow Plus tires, Front and rear full coverage finders, Hydraulic quick coupler, Aux hydraulics, Service brake coolers, Heated and powered exterior mirrors, Maintenance Pkg, Guarded transmission & bottom, F/R lever on steering column, JDLink for life of machine, Cold weather starting Pkg, Front and rear hydraulic locking differential. Automatic differential lock, Engine compartment light, block heater, Premium LED light Pkg, Environmental drains and sample ports for engine, transmission, hydraulic oils, and engine coolant

3 year 3000 hour comprehensive warranty with no travel time or milage.

John Deere 524L wheel loader has been manufactured since 2019. 524L series and P series are the same

December 6, 2023

Ben Martinson
Public Works Department
431 Letendre Ave
Port Edwards, WI 54469

Dear Ben,

Please see below for the benefits of the Next Gen small wheel loader:

Enhanced Class Leading Visibility (see pictures at figure 1)

Increased Service Intervals, with Oil Sampling Program (provided with purchase)

- 1000hr Engine Oil, Fuel Filters, Air Filters Change
- 3000hr Hydraulic Oil Change
- 3000hr Hydrostat Oil Change
- SOS Oil Sampling Kits Provided

Enhanced Cab Design and Control Layout (see pictures at figure 2)

- Large Touchscreen Display
- Auto Lighting
- Auto Temp Control
- Heated Adjustable Mirrors
- Class Leading Quiet Cab Noise

Class Leading Serviceability (see pictures at figure 3)

- Quick and Easy Daily Service Points
- Ground Level Filter Access Points
- Low DEF usage (Every 4th fuel tank fill), Horn Honk When Full
- Fit For Life DPF
- Auto Fuel Priming, DEF Purge, and LED Lighting Under Engine Doors

Class Leading Fuel Economy

- Better Power & Torque Down Low
- Greater Torque Rise with Reduced Engine RPM

Optimized Hydrostatic Transmission & Hydraulics (see pictures at figure 4)

- Longevity (have machines with over 25,000hrs)
- Adjustable Powertrain Modes
- Auto Wheel Torque and Diff Lock
- Easily Adjustable Auxiliary Flow to Maximize Worktool

Enhanced Fusion Coupler & Performance Series Buckets (see pictures at figure 5)

- Better Visibility to Coupler/Worktool
- Constant Pressure Wedge Style Coupler Eliminates Bucket Coupler Wear
- Increase Rack Angle for Load Retention and Increased Breakout Forces
- Standard Parallelism for Increased Fork Performance
- Push Button Kickouts Independently Set (no magnets or wrenches)



www.fabickcat.com

Milwaukee
11200 West Silver Spring Rd.
Milwaukee, WI 53225-3118
414/461-9100 Tel
414/461-8899 Fax

Power Systems
11200 West Silver Spring Rd.
Milwaukee, WI 53225-3118
414/461-9100 Tel
414/615-2101 Fax

Madison
1111 Applegate Rd.
PO Box 259040
Madison WI 53725-9040
608/271-6200 Tel
608/271-1410 Fax

Eau Claire
7860 Partridge Rd.
PO Box 1088
Eau Claire, WI 54702-1088
715/874-5100 Tel
715/874-5182 Fax

Power Systems
7877 Partridge Rd. (City EE)
PO Box 1088
Eau Claire, WI 54702-1088
715/874-5100 Tel
715/874-5151 Fax

LaCrosse
1620 Carol Court
La Crosse, WI 54601-3056
608/783-4891 Tel
608/781-3222 fax

Superior
111 Moccasin Mike Rd.
Superior, WI 54880-4358
715/398-9696 Tel
715/398-9696 Fax

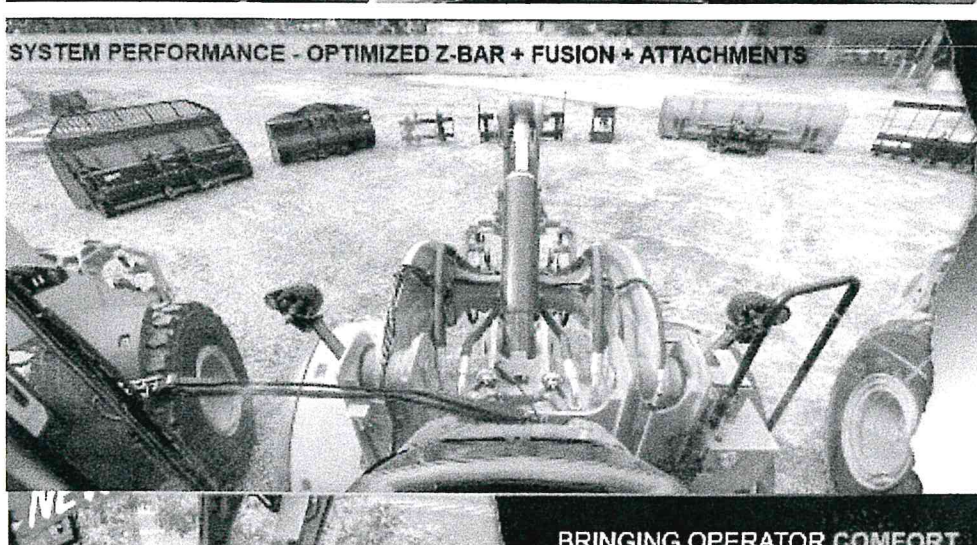
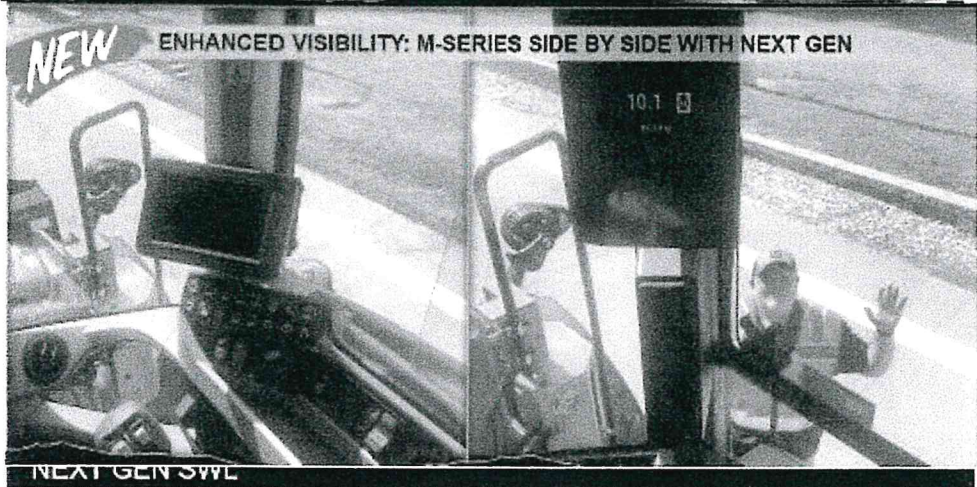
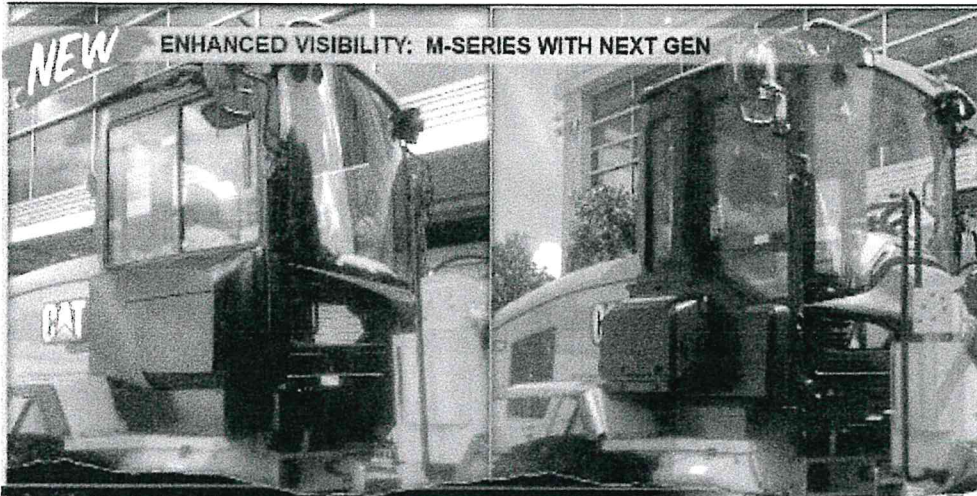
Green Bay
600 Hansen Rd.
PO Box 19976
Green Bay, WI 54307-9176
920/498-8000 Tel
920/499-4844 Fax

Power Systems
2700 South Broadway
PO Box 19976
Green Bay, WI 54307-9176
920/498-8000 Tel
920/499-0690 Fax

Wausau
9601 Christie Ln.
PO Box 350
Schofield, WI 54476-0350
715/359-6220 Tel
715/359-5550 Fax

Marquette
US Highway 41 West
PO Box 638
Marquette, MI 49855-0638
906/475-4191 Tel
906/475-4054 Fax

1)


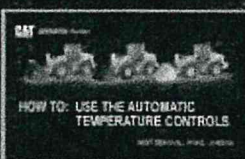


BRINGING OPERATOR COMFORT

2)

NEW AUTO TEMP CONTROL - WITH DEFROST BUTTON

SET AND FORGET
DEFROST AT THE TOUCH OF A BUTTON
AUTO TEMP CONTROL - STANDARD

NEW AUTO LIGHTING - SMALL TOUCHES MAKE A BIG DIFFERENCE


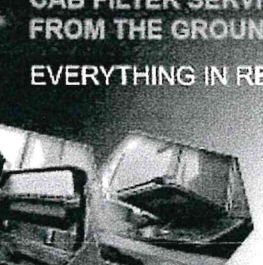
LIGHT THE WAY
SUN GOES DOWN, LIGHTS COME ON AUTOMATICALLY
DAY TIME RUNNING LIGHTS




3)


QUICK AND EASY ACCESS TO DAILY SERVICE ITEMS

QUICKLY CHECK YOUR DAILY SERVICE ITEMS, AND GO TO WORK
CAB FILTER SERVICE FROM THE GROUND
EVERYTHING IN REACH

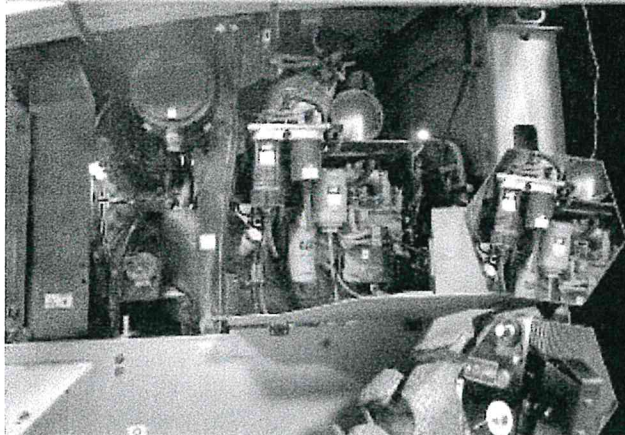



EASY TO USE AND EASY TO MAINTAIN (EPA T4 FINAL / EU STAGE V)

EASY ACCESS DIESEL EXHAUST FLUID (AdBlue™) FILL ON SERVICE SIDE
HORN HONK WHEN FULL KEY ON DURING TOP OFF
FILL THE DEF TANK WITH EVERY ~4TH FUEL FILL
LEVEL TO VOLUME "CHEAT SHEET" ON ACCESS DOOR



EASY TO USE AND EASY TO MAINTAIN (EPA T4 FINAL / EU STAGE V)



LIGHT THE WAY WITH UNDER HOOD LIGHTING

AUTOMATIC FUEL PRIME PUMP

DEF PURGE WITH CAT

EXCLUSIVE KEEP-ALIVE RELAY

80 SECOND DEF PURGE WITH FULL ELECTRICAL SHUTDOWN (LIGHT GOES OUT)

4) NEXT GEN SWL CATERPILLAR EXCLUSIVE



"FREE WHEEL" AROUND CORNERS AND DOWN HILLS SAVING FUEL (5%)



"ENGINE BRAKING" WITH AGGRESSIVE DECELERATION, ACCELERATION, NO TRAVEL UNTIL THROTTLE APPLIED



"SOFT" DIRECTION SHIFTS & EXTENDED COAST OUT FOR CONTROL ON SNOW / ICE

NEXT GEN SWL CATERPILLAR EXCLUSIVE



AUTO WHEEL TORQUE CONTROL

LET THE MACHINE DO THE WORK

AUTOMATIC WHEEL TORQUE CONTROL

ADJUSTABLE RIMPULL CONTROL



NEXT GEN SWL CATERPILLAR EXCLUSIVE



DON'T GET STUCK, GET A CAT - AUTO DIFF LOCK 938 ONLY

FRONT AXLE DIFF LOCK STANDARD

AUTOMATIC DIFF LOCK 938 ONLY

ON THE GO JOYSTICK ACTIVATION

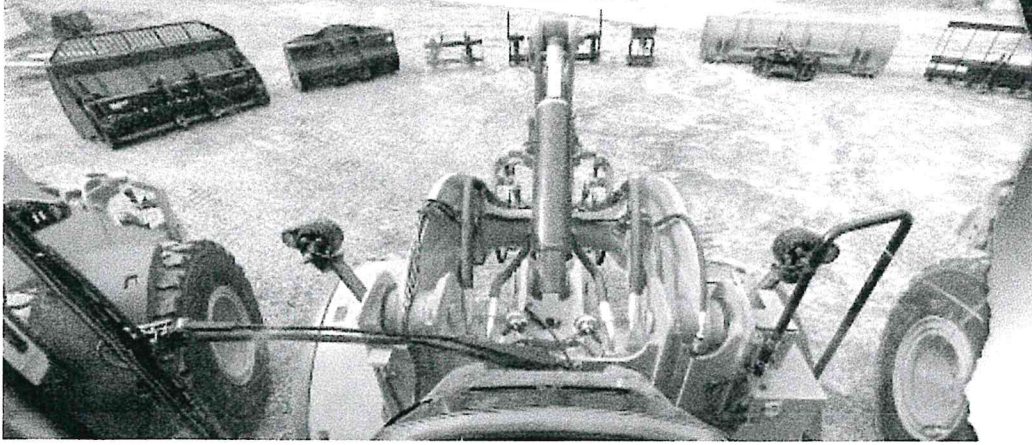
BUILT IN PROTECTION

OPTIONAL REAR LIMITED SLIP DIFF

MANUAL DIFF WORKS W/ AUTO

5)

SYSTEM PERFORMANCE - OPTIMIZED Z-BAR + FUSION + ATTACHMENTS



BCP WORK TOOLS OPTIMIZED FOR THE ULTIMATE PERFORMANCE

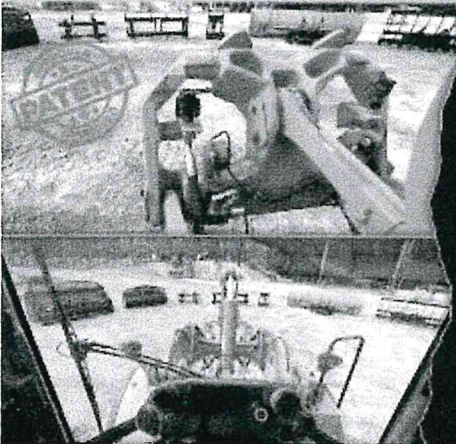


OPTIMIZED FORKS
MECHANICAL PARALLEL LIFT

PERFORMANCE SERIES
BUCKETS - AGGRESSIVE
RACK ANGLE FOR LOAD
RETENTION & 10% BOOST IN
FILL FACTORS

CAT® ATTACHMENTS ON
CAT MACHINES!

FUSION COUPLER: REDUCED OFFSET, RATTLE & WEAR FREE



POSITIVE PRESSURE FUSION
INTERFACE ELIMINATES WEAR PATENTED

MAXIMIZE PERFORMANCE WITH
REDUCED WORK TOOL OFFSET

COMMON INTERFACE 914 - 982

ISO COUPLER AVAILABLE



CARRY MORE, LOSE LESS WITH AN OPTIMIZED SYSTEM



GREAT LOAD RETENTION

BETTER RACK BACK ANGLES FOR
LARGER FILL FACTORS

10% INCREASE ON AVERAGE

CURVED BUCKET SIDES FOR
IMPROVED RETENTION

CAT	
M	
1	2
3	4
5	6
7	8
9	10
11	12
13	14
15	16
17	18
19	20
21	22
23	24
25	26
27	28
29	30
31	32
33	34
35	36
37	38
39	40
41	42
43	44
45	46
47	48
49	50
51	52
53	54
55	56
57	58
59	60
61	62
63	64
65	66
67	68
69	70
71	72
73	74
75	76
77	78
79	80
81	82
83	84
85	86
87	88
89	90
91	92
93	94
95	96
97	98
99	100

SIMPLE IN CAB KICKOUT SETTINGS TO MATCH YOUR TASK



**PUSH BUTTON KICK-OUT SETTING OF
UPPER, LOWER AND TILT**

**ATTACHMENT KICKOUTS INDEPENDENTLY
PROGRAMMED (SPECIFIC TO OPERATOR PROFILE)**

**MAXIMIZE CUTTING EDGE LIFE WITH
LOWER KICKOUT**

NO MAGNETS OR WRENCHES

