

Village of Port Edwards

Municipal Building
201 Market Ave. P.O. Box 10
Port Edwards, Wisconsin 54469
Phone: 715-887-3511

VILLAGE OF PORT EDWARDS

PUBLIC MEETING NOTICE PARKS AND RECREATION MEETING Wednesday, 25 January 2023 4 P.M. At Marshall Buehler center

This meeting is open to public attendance.

ZOOM- <https://us06web.zoom.us/j/85061100843?pwd=TDJRK0ZxWmRKRkRXLytFdk5Nc1d4dz09>

Meeting ID: 850 6110 0843, Passcode: 858938, One tap mobile +13126266799

Phone call only- Meeting Dial-in number: 715-423-6698, Access Code ID: 02067

PR Agenda:

1. Call to order
2. Roll call.
3. Approve the agenda
4. Approve 29 September 2022 minutes
5. Public comments on agenda items
6. Chairperson comments
7. Update/discussion on the broken slide at triangle park
8. Kayak input update
9. Dog park update. Any complaints from Employees? Garbage/ waste being picked up appropriately?
10. Community calendar ideas
11. Ripple creek park updates, potential all inclusive playground , ask for community collaboration/ funding.
12. Old Business
13. New Business
14. Correspondence received by Chairman, Committee members or Village Administrator
15. Agenda items for next meeting
16. Next meeting date, 22 February 2023 4pm, in person at Marshall Buehler center
17. Adjourn

Village of Port Edwards
Betsy Mancl – Committee Chairman

VILLAGE OF PORT EDWARDS

Port Edwards, Wisconsin

COMMITTEE: Parks & Recreation

DATE: October 27, 2022

TO: JOSEPH ZURFLUH

cc: BETSY MANCL

SUE MITCHELL

TIARA GRUNDEN

SCOTT DREW

CALEB MCGREGOR

ERIK SAYLOR

DAILY TRIBUNE

WFHR/WGLX

NICK ABTS

RAYMOND BOSSERT

JASON WORDEN

DIANE TREMMEL

LONN RADTKE

Purpose of Meeting: Regular Monthly Meeting

Attendance: R. Bossert, J. Zurfluh, B. Mancl, T. Grunden (ZOOM), Radtke

Absent: None

Citizens: None

Subjects Discussed, Action Taken & Board Action Required:

Regular Monthly Meeting

- ***Call to order:*** Meeting called to order by Mancl - Chairman at 4:00 p.m.
- ***Roll Call:*** All present from above.
- ***Approve the agenda & previous month's minutes:*** **MOTION** (Radtke/Grunden) to approve the agenda & minutes from 29 September 2022. **Motion carried.**
- ***Public comments on agenda items:*** None.
- ***Committee Chairperson's comments:*** None.
- ***Parks & Recreation Updates.***
- ***Old Business.***
 - a. **Discuss the 2023 Parks budget.** Bossert explained the one page in the packet contains the 2023 budget for parks. Parks include cemetery, shelter house, skating pond, warming house, & splash pad. The total budget is \$121.5k with \$57.5k towards salaries, \$22.5 in a rolling capital improvement account for big expenditures, & around \$40k left for Parks for mowing, weeding, etc. No changes to past budget sheets. Issues with the expected

state funding and lack of net new construction we are seeking other opportunities to find revenue sources.

- ***New Business.***

- a. **Legacy Grants.** No change to the \$500k grant from Legacy, spent approx. \$25K to put a bike trail slab which was poured this week. DMI is cleaning up on the backside of the fence. We have expended some Legacy on the Bike trail connection this past month.
- b. **Dog Park.** Fencing is being emplaced, they have submitted DOG park rules for PLPIT review and we will adjust our ordinances over time to accommodate any issues we find. We will add a quarterly DOG park update in Parks for discussions.
- c. **ARPA.** No funding proposed.

Recommend a continuation of summer fest activities over the winter such as a monthly holiday skate. Will expand food opportunities to include police, fire, veterans, & high school fundraisers. For tree lighting, inquire about the school choir or band to play during the lighting. Trunk or Treat is on Thursday 27 October, currently have 11 participants - all citizens.

- ***Correspondence received.*** None.
- ***Agenda items for next meeting.*** ARPA projects for parks & specific capital projects.
- ***Next meeting date:*** 17 November 2022 at 4:00 p.m., in person at Marshall Buehler Center.
- ***Adjourn:*** Adjourned at 4:30 p.m. by Mancl.

Betsy Mancl – Chairman



Ripple Creek Park

Acreage: 28.3- Land Value \$230,000

Facilities:

1x tennis court: \$15,400

1x basketball court: \$15,400

3x baseball fields w/dugouts: \$85,000

1 open shelter (20'x20'): \$67,600

1x concession stand: \$19,200

1x enclosed shelter w/restrooms: \$105,000

9 hole disc frisbee course: \$5600

2x playgrounds: \$108,000

1x Water tower: \$1,667,400

1x Flagpole/Vet Monument: \$1600

1x 5 Acre Dog park: TBD

TOTAL: \$2.1M

Description: Ripple Creek park established in the 1960s as the Signature Port Edwards Park. Central to the Village and having the Most Growth potential.

Renovations in past 5 years:

Annual maintenance: \$50,000

Future Improvements/Additions: Dog Park, Upgrade Warming House

Pending Ripple Creek Dog Park

Existing Fence 4-6' tall

New Fence 4-6' tall

Gates

1 door or double

Fence

screening

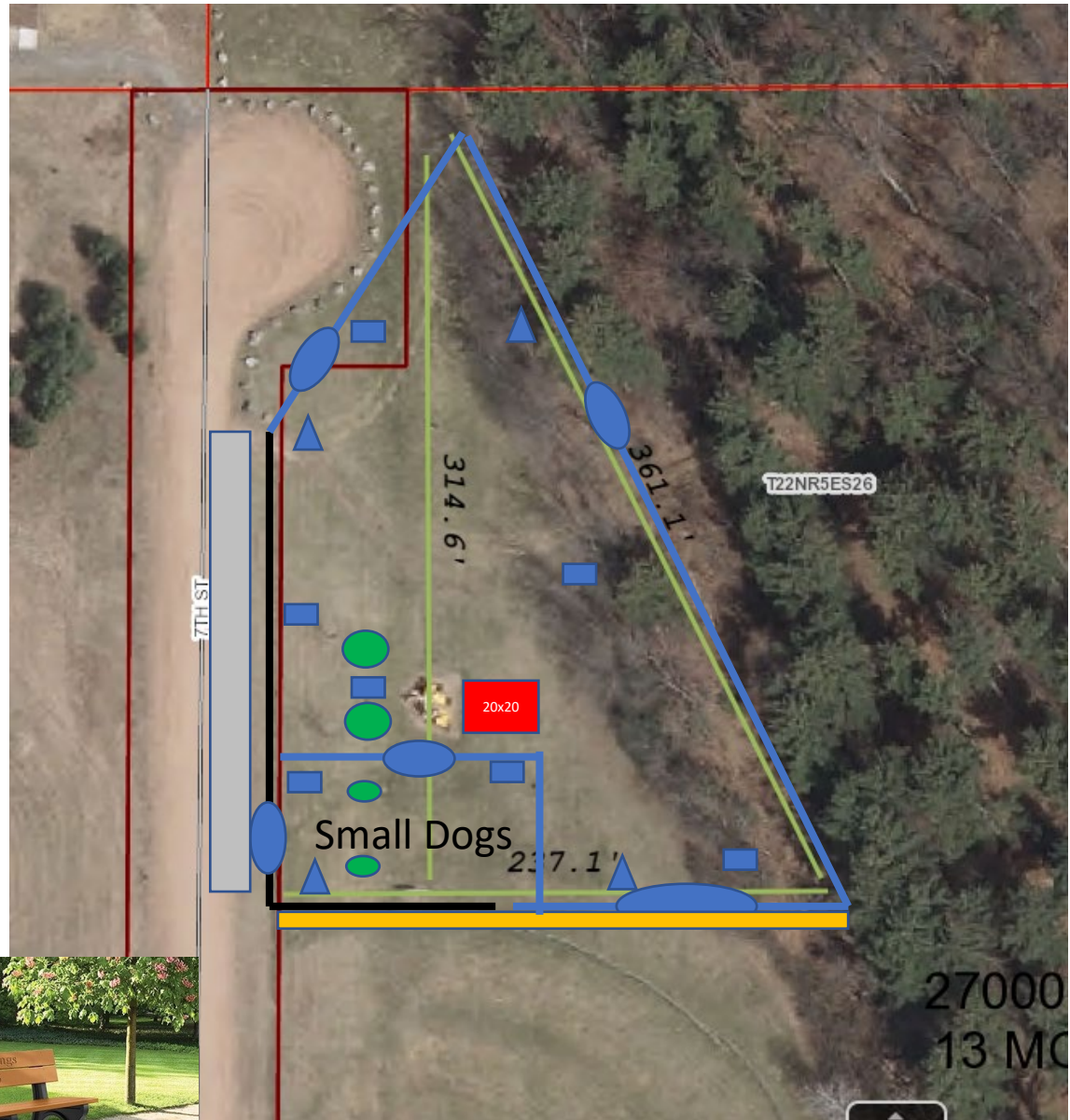
Gravel for parking

Bench

Pet Waste receptacle

Future Shelter

Tree



Playground will stay for now

“Triangle” Park

Acreage:.49 Acres

Land Value \$60,000

Facilities:

Playground: \$23,100

Benches : \$5000

Total: \$28,100

Renovations in past 5 years:

Annual Maintenance: \$10,000



Description: Center Village park, used for open space.

Future Improvements/Additions: Open shelter, Gazebo



Kayak Park NEPCO/Wisconsin River

Acreage: 1.5 Acres

Land Value: \$25,000

(Use Contract with DOMTAR)

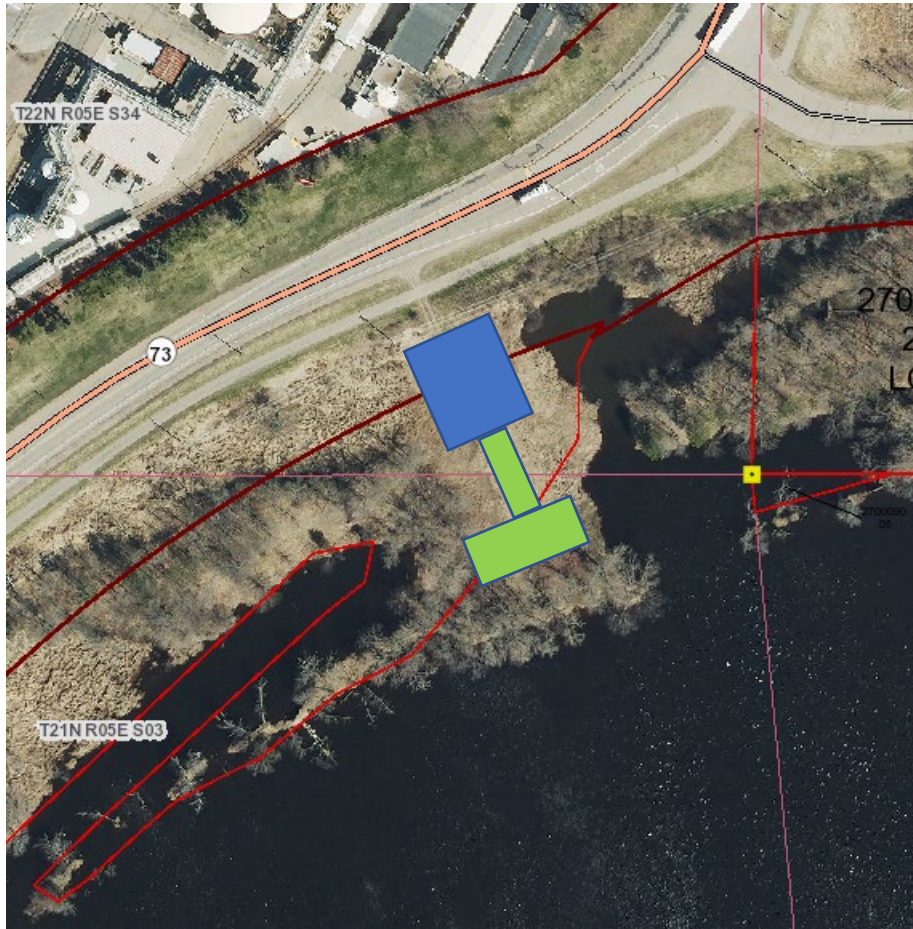
Facilities:

None

Renovations in past 5 years:

Description: Working proposal with DOMTAR
On kayak entry point, with walkway and parking
For both Wisconsin River and NEPCO lake

Future Improvements/Additions: Parking (Blue), Walking trails (Green), Launch pads(Green)
Possible Lighting at parking lots, Balusters to Block Trails from motorized traffic



ERCO Park Kayak input Wisconsin River

Acreage: 1.5 Acres

Land Value: \$25,000

(Use Contract with DOMTAR)

Facilities:

None

Renovations in past 5 years:

Description: Working proposal with DOMTAR
On kayak entry point, with walkway and parking
For both Wisconsin River.

Future Improvements/Additions: Parking (Blue), Walking trails (Green), Launch pads(Green)
Possible Lighting at parking lots, Balusters to Block Trails from motorized traffic



John Edwards Statue

Acreage: .5 Acre

Land Value: \$15,000

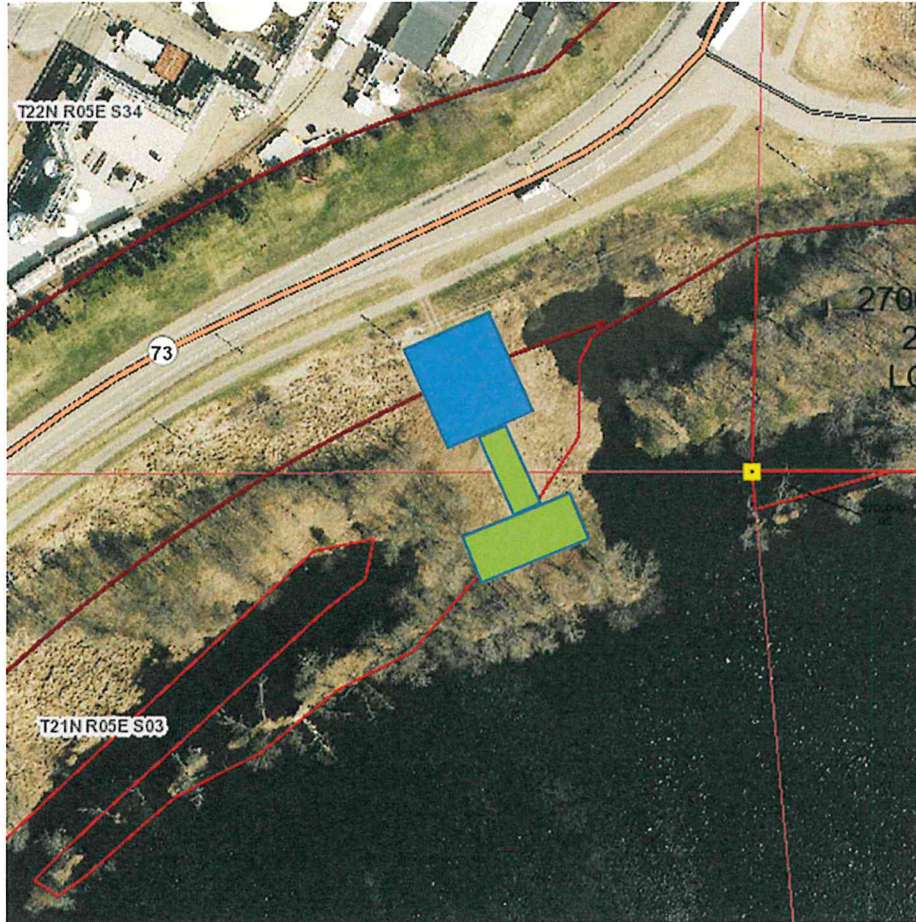
Facilities:

Statue: \$150,000

Renovations in past 5 years:

Description: Proposal for park donated by DMI once the Central Wisconsin Business facility is developed

Future Improvements/Additions:



ERCO Park Kayak input Wisconsin River

Acreage: 1.5 Acres

Land Value: \$25,000

(Use Contract with DOMTAR)

Facilities:

None

Renovations in past 5 years:

Description: Working proposal with DOMTAR
On kayak entry point, with walkway and parking
For both Wisconsin River.

Future Improvements/Additions: Parking (Blue), Walking trails (Green), Launch pads (Green)
Possible Lighting at parking lots, Balusters to Block Trails from motorized traffic



Kayak Park NEPCO/Wisconsin River

Acreage: 1.5 Acres
 Land Value: \$25,000
 (Use Contract with DOMTAR)

Facilities:
 None

Renovations in past 5 years:

Description: Working proposal with DOMTAR
 On kayak entry point, with walkway and parking
 For both Wisconsin River and NEPCO lake

Future Improvements/Additions: Parking (Blue), Walking trails (Green), Launch pads (Green)
 Possible Lighting at parking lots, Balusters to Block Trails from motorized traffic

What's Next?

- Look for Playground Equipment upgrades
- What park can we open this year?
- Install the New trail Signs that are funded.
- Publish the Summer 2021 event schedule
- Sign agreements with DOMTAR to use land for kayak inputs

February

2023

Village of Port Edwards, WI

Village of Port Edwards

COMMUNITY Calendar, (Legend); *(All meetings held in Marshall Buehler Center)*

PS- Public Safety Committee, PLPIT- Planning, Legislative, Property, Info technology Committee, FHR- Finance and Human Resources Committee, PW- Public Works Committee, PR- Parks and Recreations Committee

The Ripple Creek **Skating POND** and **Warming House** will open based on weather.



Sunday	Monday	Tuesday	Wednesday	Thursday	Friday	Saturday
		PS Meeting 4pm	¹ PLPIT meeting 4pm TRASH P/U	² FHR meeting 4pm	³	⁴
⁵	⁶	⁷	⁸ Trash/Recycle/Bulk PU School Board Mtg 5pm	⁹	¹⁰ PEPO family night out Ripple Creek, 6-8pm	¹¹ Humane Society Snow Sculpture 9-2 pm, Ridges Golf
¹²	¹³	¹⁴ Village Board Meeting 7pm	¹⁵ NEPCO lake Transition Meeting 1200 Trash PU	¹⁶	¹⁷	¹⁸
¹⁹	²⁰	²¹	²² Parks and REC 4pm PW Meeting 5pm Trash/recycle P/U	²³	²⁴	²⁵
²⁶	²⁷	²⁸				

View and edit this document in Word on your computer, tablet, or phone. You can edit text; easily insert content such as pictures, shapes, and tables; and seamlessly save the document to the cloud from Word on your Windows, Mac, Android, or iOS device.